



The information published here is current as of October 2017.

Published by: Kyoto Tourism Federation

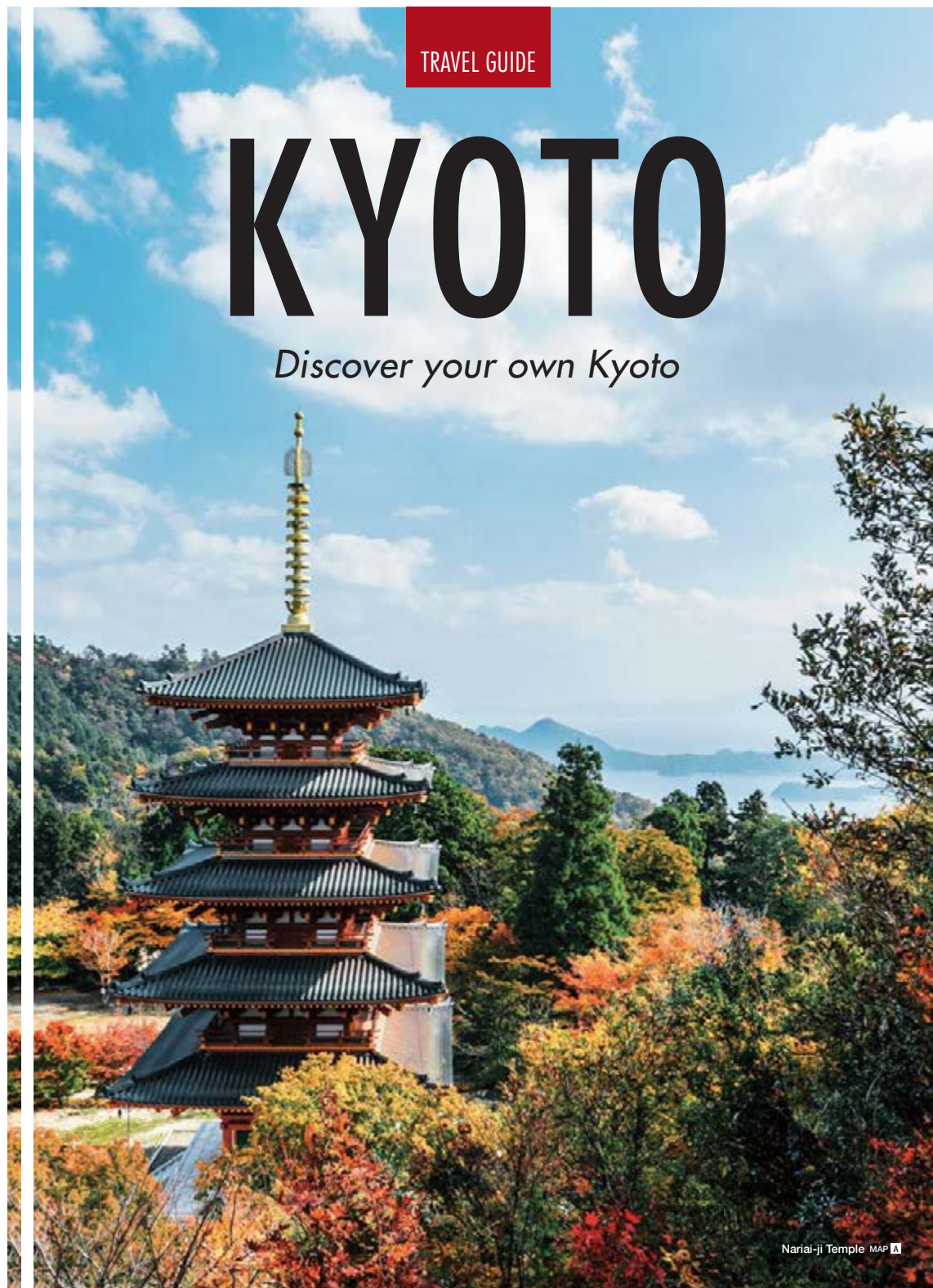
Design: GRAPHIC Corporation

In collaboration with: Tourism Policy Division, Kyoto Prefectural Government

TRAVEL GUIDE

KYOTO

Discover your own Kyoto



A Kyoto You Haven't Seen Yet

Kyoto, a city of temples, shrines, townscapes and traditions of the ancient capital. Venture out a little farther, and you'll find another Kyoto entirely where beautiful, natural landscapes expand in every direction.

To the north, you'll find "Kyoto by the Sea," and glimpse the natural vistas of the Sea of Japan. In the center of the prefecture, you'll find "Kyoto in forests," where the rich culture of the woodland foothills is passed down from generation to generation.

To the south, a "Kyoto Infused with Tea," awaits you with stunning views of tea plantations that have fostered the Japanese tea culture.

Finally, you'll find "Kyoto Otokuni Bamboo Grove" which was the capital of Japan before it was moved to Heian (modern day Kyoto City), and is still home to ancient burial mounds and bamboo forests.

Discover a different side of Kyoto, natural and beautiful.





Kyoto Infused with Tea Home of Japanese Green Tea

The area that extends south of Kyoto City is a tea-producing region where you can see beautiful plantations throughout the valleys. These plantations have supported Japanese tea culture for over 800 years, and have produced high-quality matcha and *gyokuro* (the finest grade of green tea) and many other varieties. The area is also dotted with temples and shrines that speak of the history of this region, and are registered World Heritage Sites, National Treasures, or Important Cultural Properties. Come and get an up-close look at traditional Uji tea culture and Japanese history.

Ishitera Tea Fields MAP 1

This tea-infused area of Kyoto is filled with scenic tea plantations. Among these towns, Wazuka is called the "hometown of tea" and is known as the chief production center of Uji tea. The Ishitera tea fields stretching up the mountain slopes are a magnificent sight.



Byodoin Temple MAP 2

This World Heritage Site was converted from a villa into a temple by Fujiwara no Yoritomi in 1052. The Phoenix Hall is pictured on the 10-yen coin.

Sewaritei Cherry Blossoms MAP 3

A 1.4-km embankment between the Uji and Kizugawa Rivers. In spring, roughly 250 cherry trees bloom to form an impressive cherry blossom tunnel.



The Art of Hand-Rolled Uji Tea

This method was proposed in 1738 by Nagatani Soen, a tea farmer in Ujitawara Town. The technique of hand-rolling tea leaves to make outstanding green tea is still in use today.



Joruri-ji Temple MAP 4

The main temple building and three-story pagoda, nine seated statues of Amitabha Tathagata Buddha, and Four Heavenly Kings statues are all designated as National Treasures. It is also a famous place to view autumn leaves.



Kyoto by the Sea Ocean Views Untouched by Time

"Kyoto by the Sea," facing the Sea of Japan in the north of Kyoto Prefecture, has long been a setting for myths and folklore. Aristocrats memorialized its majestic landscape, surrounded by the sea and sky, in *waka* poems during the Heian period (794-1185), when Kyoto was the capital of Japan. With Amanohashidate, one Japan's three meccas, and the Ine *funaya* (boat houses) that convey the unique charm of a fishing village, the iconic scenery of the Kyoto sea still remains today.



Amanohashidate MAP 6

According to legend, a long ladder used by the gods to travel between heaven and earth fell out of the sky into the sea and became Amanohashidate making it a literal piece of heaven on earth!
No wonder it was selected as one of Japan's three most scenic spots!

Shizaki Inari-jinja Shrine MAP 6

From mid-to late April, the pink Mitsuba azaleas on the shrine grounds seem to surround the vermilion shrine gate. Get a great view of Amanohashidate from the observation deck on the mountain top.



Kongo-in Temple MAP 7

The three-tiered pagoda, an Important Cultural Property, stands in harmony with the green leaves of spring, the colorful leaves of autumn, and the falling snow of winter. This temple is famous for its beautiful views year-round.



Chirimen Silk Crêpe

Chirimen is a type of silk product originating in the Tango region in northern Kyoto, an area known as the home of textiles. *Tango chirimen* has a history spanning 300 years, and has sustained Japanese kimono culture as a fabric with outstanding flexibility and high dye affinity.

Ine *Funaya* (boat houses) MAP 8

Funaya (Boat houses) are standing in a row around Ine bay, closest to the sea. There are two floors in *Funaya*. The first floor is used as a garage for a boat. The second floor is used as another living room besides the one in a main house.





Kyoto Otokuni Bamboo Grove Where Ruins Tell Of the History of Japan

"The Tale of the Bamboo Cutter" has been passed down as Japan's oldest tale. One of the origins for this story may be Otokuni, filled with beautiful bamboo groves. Located southwest of Kyoto City, Nagaoka-kyo was once the capital of Japan. Many historic sites, temples, and shrines remain, including ancient burial mounds and Nagaoka Tenman-gu Shrine. Get a sense of Japanese history and take in the flowers and beautiful natural scenes of the changing seasons.

Take-no-Michi (Bamboo Path) MAP [8]

This 1.8-km bamboo forest path is lined with lush green thickets and trim bamboo hedges. The sound of bamboo grass in the wind and the sunlight streaming through the grove makes this a popular place for a soothing stroll.



Yanagidani Kannon Yokoku-ji Temple MAP [10]

This temple was founded on a hilltop in 806, and is believed to be a temple that can heal ailments of the eye. The beautiful garden within the grounds is a well-known spot for enjoying hydrangeas and autumn leaves.

Nagaoka Tenman-gu Shrine MAP [11]

This shrine is dedicated to the god of learning, Sugawara no Michizane. In addition to shrine events, the Kirishima azaleas, plum trees, and other seasonal flowers create a pretty scene for all who visit.



Muko-jinja Shrine MAP [13]

Founded in 718, this shrine is a designated Important Cultural Property. The stone-paved path that leads to a massive torii (archway) of the shrine is a great spot for cherry blossoms in the spring, and fall leaves in the autumn.



Asahi Beer Oyamazaki Villa Museum of Art MAP [12]

This is a British-style mountain villa that was built between 1912 and 1932. It houses an art museum and boasts a garden full of colorful flowers to be enjoyed in any season.



Kyoto in forests

Full of Nature's Blessings

The forest provides abundant natural resources that have been a blessing for inhabitants both in the distant past and the present day. This area has Japanese scenery, surrounded by nature and unchanged since ancient times, like thatched-roof houses that retain an air of the past, mountains like Oeyama that create stunning views, and farms that grow Kyoto vegetables that add color to our cuisine.

Miyama's thatched village (Kayabuki no Sato) MAP 14

This village boasts 38 thatched roof houses with the scenic backdrop of the lush forests. Take in the scenery of the olden days in Japan and a lifestyle and culture that coexist with nature.



Yakuno Highland MAP 15

In the expansive, fertile hills of Fukuchiyama City, revel in the natural mountain scenery that reflects the colorful changes of the seasons.



Ankoku-ji Temple MAP 16

Reported to be the birthplace of Ashikaga Takauji, the first shogun of the Muromachi shogunate (1338-1573). The grounds of this temple are full of colorful leaves in autumn.



Hozugawa River Boat Ride MAP 17

Let the clear mountain stream carry you down 16-km through nature's beauty from Kameoka to Arashiyama. The history of boatmen dextrously steering boats down the river dates back to in 1606.

Nanatanigawa River Cherry Blossoms MAP 18

In spring, roughly 1,500 cherry trees bloom along this riverside street. It is one of the most famous local cherry blossom sites in "Kyoto in forests".



Kyoto City

1000 Years of Rich History

This city in the center of Kyoto Prefecture was the capital of Japan for over 1000 years. The traditions of the capital, created over many generations, continue today in the city's many temples, shrines, festivals, and practices. While steeped in timeless culture, you'll find new things to surprise and delight you every time you visit. The complexity of the ancient city will leave you wanting to come back for more.



Gion Matsuri Festival [MAP](#) [19](#)

This magnificent festival is counted as one of Japan's three major festivals. Held from July 1st to 31st, the parade of festival floats through the downtown area has been registered as a UNESCO Intangible Cultural Heritage.



Kodai-ji Temple [MAP](#) [20](#)

Nene, the wife of 16th-century influential figure Toyotomi Hideyoshi, built this temple to pray for the soul of her husband. See the cherry blossoms in spring, and the colorful foliage illuminated at night in autumn.

Kiyomizu-dera Temple [MAP](#) [21](#)

This World Heritage Site features a main temple complete with a large wooden stage, often called the "stage of Kiyomizu," and other scenic sites. It is also a well-known viewing spot for cherry blossoms and autumn leaves.

* Access to the main hall is still allowed during the reroofing construction of cypress bark roof from February 2017.



Wild boar hot pot is a local dish from the forests of Kyoto, made by stewing thinly sliced boar meat with vegetables.



These Japanese sweets in the shape of seasonal flowers are a quintessential part of tea ceremony.



High-quality silk goods and Nishijin silk fabrics have been adored and used since ancient times in kimono and other Japanese goods.

Food & Souvenirs

Kyoto's distinctive food and craftsman-ship culture can be traced back to its crystal clear waters and fertile lands. From a wide range of seasonal cuisine to pure fresh sake, to kimono that seem to glow with the skill of the artisans who make them, Kyoto is full of unique goods that speak of the traditions of each part of the prefecture.



Bamboo shoots are the typical taste of spring, and can be enjoyed in a wide variety of dishes.



Historic sake breweries produce distinctive sake in all areas of Kyoto.



Taste the refined flavors of the Matsuba-gani snow crab caught in the Sea of Japan in Kyoto by the sea.



Try matcha, the very essence of tea tradition, in sweets as well as in its original form.



Experience the traditions of Japanese food through *Kyōryō* (Kyoto cuisine) that highlights out the flavors of local Kyoto vegetables and seasonal ingredients.

Getting to Kyoto



Getting to Kyoto from other major cities

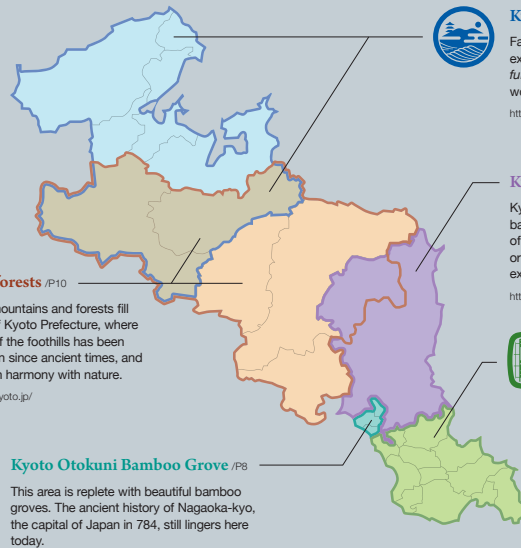
- From station**
- Tokyo Station**
 - > About 2 hr 20 min by Shinkansen
 - Nagoya Station**
 - > About 35 min by Shinkansen
 - Kanazawa Station**
 - > About 2 hr 10 min by JR Limited Express
 - Osaka Station**
 - > About 30 min by JR train
 - Hiroshima Station**
 - > About 1 hr 40 min by Shinkansen
 - Hakata Station**
 - > About 2 hr 50 min by Shinkansen

- From the nearest airports**
- Kansai Int'l Airport (KIX)**
 - > About 1 hr 15 min by JR limited express
 - Osaka Int'l Airport (Itami / ITM)**
 - > About 50 min by expressway bus
 - Kobe Airport (UKB)**
 - > About 1 hr 10 min by train

Kyoto Prefecture Information

Encounter the unique charms of a whole new Kyoto in these five regions of the prefecture.

Discover your own Kyoto



Kyoto by the Sea /P6
Facing the Sea of Japan, northern Kyoto has expansive views of the sea and sky. See *funaya*, a type of boat house unique in the world, and beautiful natural vistas.
<http://www.uminokyoto.jp/global/>

Kyoto City /P12
Kyoto City's history as Japan's capital dates back more than 1,000 years, and the traditions of the olden days are still alive today. The origins of fine Japanese culture can be experienced here.
<https://kyoto.travel/en>

Kyoto Infused with Tea /P4
Kyoto's tea-producing region—the birthplace of Japanese tea—spreads south of Kyoto City, and produces high-quality matcha green tea, *gyokuro* (the finest grade of green tea) and many other varieties.
<http://ochanokyo.jp/>

Kyoto in forests /P10
Expansive mountains and forests fill the center of Kyoto Prefecture, where the culture of the foothills has been passed down since ancient times, and people live in harmony with nature.
<https://morinokyoto.jp/>

Kyoto Otokuni Bamboo Grove /P8
This area is replete with beautiful bamboo groves. The ancient history of Nagaoka-kyo, the capital of Japan in 784, still lingers here today.

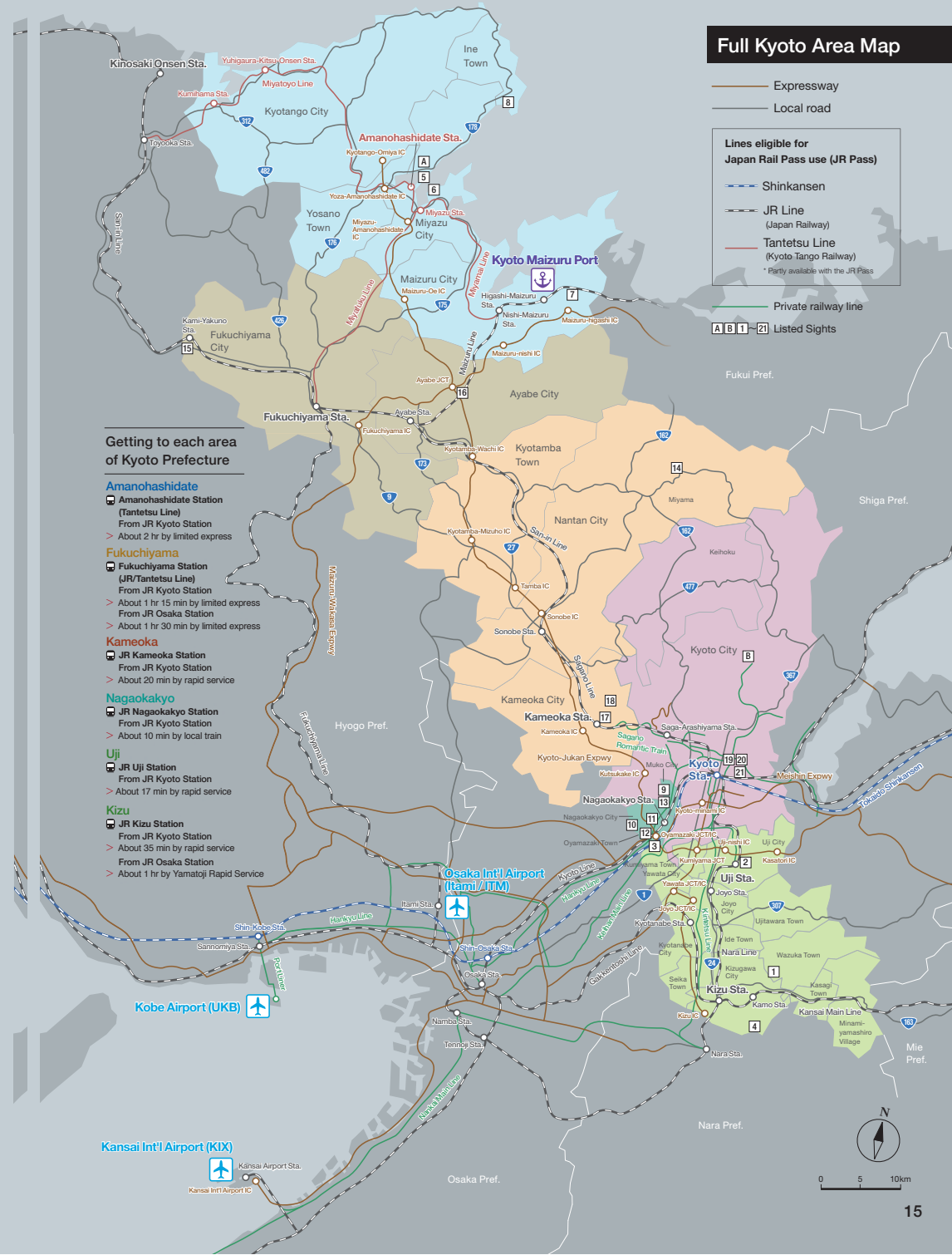
Tourist Information Centers

- Kyoto Tourist Information Center / KYOTO**
Kyoto Station Building 2F TEL +81-75-343-0548
- Kyoto Tourist Information Center / TOKYO**
Marunouchi Trust Tower North 1F TEL +81-3-5220-7055

Useful Websites

- Kyoto Tourism Federation**
<http://www.kyototourism.org>
- Japan National Tourism Organization / JNTO**
<http://www.jnto.go.jp/>

Full Kyoto Area Map



— Expressway
— Local road

Lines eligible for Japan Rail Pass use (JR Pass)

- Shinkansen
- JR Line (Japan Railway)
- Tantetsu Line (Kyoto Tango Railway)
- Private railway line

* Partly available with the JR Pass

A B 1 ~ 21 Listed Sights

Getting to each area of Kyoto Prefecture

- Amanohashidate**
Amanohashidate Station (Tantetsu Line)
From JR Kyoto Station
> About 2 hr by limited express
- Fukuchiyama**
Fukuchiyama Station (JR/Tantetsu Line)
From JR Kyoto Station
> About 1 hr 15 min by limited express
From JR Osaka Station
> About 1 hr 30 min by limited express
- Kameoka**
JR Kameoka Station
From JR Kyoto Station
> About 20 min by rapid service
- Nagaokakyo**
JR Nagaokakyo Station
From JR Kyoto Station
> About 10 min by local train
- Uji**
JR Uji Station
From JR Kyoto Station
> About 17 min by rapid service
- Kizu**
JR Kizu Station
From JR Kyoto Station
> About 35 min by rapid service
From JR Osaka Station
> About 1 hr by Yamatoji Rapid Service

Kansai Int'l Airport (KIX)
Kansai Airport Sta.
Kansai Int'l Airport IC

Kobe Airport (UKB)

Osaka Int'l Airport (Itami / ITM)

